

Current Students & Staff - How to log in?

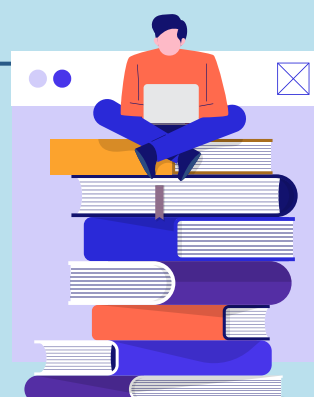


1) BROWSE TO

<https://enroll.cut.ac.za/auth/>

2) You will be redirected to the login page

Enter your staff or student number and click on the Log In button.

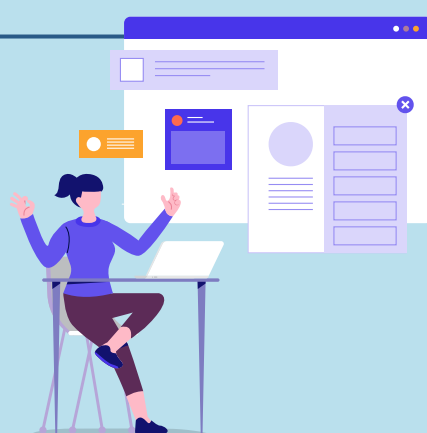


3) After you enter your staff/student number

You will be redirected to the Microsoft Office 365 page, where you will be prompted for your CUT email address.

4) Enter your email address and click next

You will be redirected to the Microsoft Office 365 password page. Enter your password and click Sign in.



5) Verify your identity

Select your preferred verification method. Call or Text to proceed.

6) To login with the verification code

You will be redirected to the enter code page, enter the verification code provided and click the Verify button.



8) You have successfully logged in!

You be will redirected to iEnabler

